

EasyReader Pro
Prompting Software
For Windows 9X/NT4/2K/ME/XP



**Instruction
Manual
Version 4.6 Legacy**

Audio Video Design, Inc.
1660 Alpha Drive
Melbourne, FL 32935
321-956-2511
smcd@avd-prompt.com
www.AVD-prompt.com

Friendly and helpful technical assistance can be obtained by calling

Audio Video Design, Inc.

Monday - Friday 9:00 to 5:30 Eastern Time
321-255-1616.

E-mail: **support@AVD-prompt.com**

If you have questions or suggestions about additional software features, hardware compatibility, performance issues, software bugs, or installation problems, please contact:

Russell Holloway (HollowSoft Consulting)

800-815-6578

E-mail: **russavd@bellsouth.net**

EasyReader Pro Teleprompter Software
is distributed exclusively by

Audio Video Design, Inc.

EasyReader Pro
Copyright 1999-2003
Russell Holloway/
Audio Video Design, Inc.

All Worldwide Rights Reserved

The contents of this manual may not be reproduced
in whole or in part without the express written consent
of Audio Video Design, Inc.

EasyReader Pro Teleprompter Software Manual,
Copyright 1999-2003, AVD, Inc.

Table of Contents

Software Specifications	1
Hardware Requirements	2
Installing EasyReader Pro	3
Installing the Dongle Key	3
Running EasyReader Pro	4
Editing Scripts In EasyReader Pro	5
Editor Screen Buttons Detailed	6
Color Selection Buttons	6
Text Attribute Buttons	7
Font Selection Buttons	7
Text Alignment Buttons	7
All Caps and All Lower Case Buttons	8
Cut, Copy, And Paste Buttons	8
Select All Button	8
Clear Text	8
Story Break	9
Insert Bookmark	9
Selective Bookmark	9
Undo and Redo	10
Spelling	10
Find	11
Replace	11
Shortcuts	12
Editor / Prompter Width	12
Print	13
Load Text	14
Save Text	15
Setup	16
Start	22
Exit	22
F1 & F2	23
EasyReader Pro Scroller Mode	24
Keyboard Controls Used In Scroller Mode	24
Mouse Controls Used In Scroller Mode	26
AVD Hand Controller Functions	27
AVD Foot Controller Functions	28
How To Calibrate Your AVD Hand Controller	29
Tips On Using EasyReader Pro	30
Display Troubleshooting	31
Technical Support	32

EasyReader Pro Software Specifications

Operating System Supported: Windows 9x/NT4/2000/ME/XP.

Screen Resolutions Supported: 640x480 and up.

Color Depths Supported: 256 Color, High Color, True Color.

Full-featured premium Word Processor.

- block editing, search/replace function, cut/copy/paste, spell checker, support for bold, italic, underline, and strike-through text, all-caps function, all lower-case function, undo/redo support, natively supports Text and Rich Text files, loads most Microsoft Word files (if Microsoft Word is installed).
- loads any TrueType font, scales from 8 point to 48 point size.
- supports multiple colors for text, screen, and text background. All colors can be customized.
- editor writes to 50% size, doubles for scrolling.
- custom margins options for scroll screen.
- Prints scripts in a wide variety of formats.

One-click scrolling: From top of script or from Cursor Point.

Language support: Virtually every language is supported, including right-to-left languages (Hebrew and Arabic) and oriental languages.

Easy-to-use screen interface: Intelligent and intuitive screen commands

Easy-to-use speed control: Smooth at all readable speeds using minimum computer specs as listed above.

Hand and Foot Controllers now available: Work on desktops or laptops.

Hardware Requirements

EasyReader Pro requires a PC with a minimum of a P100 processor. The video card must support 64-bit Windows graphics acceleration and have at least 2MB of video RAM. Smooth scrolling is more dependent on the video/graphics chipset than on the speed of the processor.

High-color or true-color scrolling is best accomplished on a computer with faster graphics acceleration, more video RAM, and a faster processor speed, especially when prompting in 800x600 or greater resolution.

If running from a notebook computer, a TFT Active Matrix display will insure no lagging or smearing of scrolling text for the operator. It is also important to find out whether the notebook you're considering as prompter host is capable of displaying out the VGA port and onboard simultaneously.

Maximize Performance Through Optimum Display Settings:

Although the program supports virtually any display resolution your video card is capable of, very high resolution displays with High Color or True Color are only recommended for very fast PC's with powerful video cards. The number of colors displayed has the largest impact on performance. 1024x768 at 256 colors is typically faster than 640x480 using True Color. The highest performance can be found using 640x480 or 800x600 resolution at 256 colors. For best results, start at one of these resolutions and color depth. Then, increase the screen resolution and color depth until you have determined the maximum settings your PC can handle. Remember, programs like EasyReader Pro are much more dependant on your video card speed than your computer speed. A slower system with a good video card will perform much better than a faster computer with a slower video card.

Installing EasyReader Pro

- 1.) Place the EasyReader Pro CD into your CD Rom Drive
- 2.) Click on the Start menu, select Run, and type the following:
D:\EasyReaderPRO.EXE (if "D" is not your CD Drive, type in the appropriate drive letter). You may also use "Browse" if necessary.
- 3.) Follow the on-screen prompts to complete the installation. You may change the directory into which the program is installed. The default directory is C:\Program Files\EasyReaderPro.
- 4.) Right-click anywhere on the desktop and select Properties. Change your display settings to 640x480 or 800x600 at 256 colors for the best performance on a slower machine.
- 5.) If you have a faster computer, and display performance is acceptable at 640x480 or 800x600 at 256 colors, try increasing video resolution and color depth if you like. Most computers work very well at 800x600 with High Color.

Installing the Dongle Key

The dongle key is your security key for scrolling the EasyReader Pro software. Without this dongle key you will not be able to scroll, you will only be able to use the editor screen in the EasyReader Pro software.

The dongle key is placed directly into the printer port on your computer. The dongle key is a "pass-through" key, which means it passes signals through to your printer. If you have a printer connected to the printer port, just unplug it, plug in the dongle key, and connect the printer to the back of the dongle key.

You can connect the dongle key before you begin the EasyReader Pro installation. If you have not connected it before beginning the install, the installation program will prompt you to connect it at the appropriate time.

Running EasyReader Pro

The **Editor Screen** works much the same way as any quality word processor does. Highlight text and select **Bold** to make it bold. Press the **Undo** button to cancel changes. Press the **Select All** button to highlight all the text at once. If you are familiar with Microsoft Word or any other word processor, you already know how to use EasyReader Pro.

There are three ways to prepare scripts for prompting in EasyReader Pro.

- The easiest way to prepare a script is to create it using EasyReader Pro's internal word processor. Just enter your text, and use the built-in functions to select text attributes, colors, and functions such as story breaks.
- You can also load a script from an external word processor using the button in the upper right corner on the editor screen. You will be able to load any **.RTF** (Rich Text Format) or **.TXT** ASCII file created on another computer, or on the system you are working on. (If you have Microsoft Word installed on your computer, EasyReader Pro will allow you to load Word **.DOC** files directly into the editor. Just select the **Word Documents** option under the **Files of Type** selection box when you are opening a document. After you have loaded the document, you can modify it any way you wish. If you save the edited document in **.RTF** format, you can load it back into the word processor that created it with the changes intact.
- EasyReader Pro also supports pasting from other programs. You can create a document in Word (even setting the colors you want to use), copy it to the clipboard, and paste it into EasyReader Pro.

Editing Scripts in EasyReader Pro

One of the first steps in editing a script is to select a font from the pull-down menu. Fonts that are san-serif are usually best for teleprompting, but it's always best to experiment.

To change the font size, just select a new font size from the size pull-down menu. Of course, larger font sizes can be read from a greater distance away from the prompter.

EasyReader Pro versions 4.6 and above support multiple fonts and font sizes in the same script. However, keep in mind that changes in fonts and font sizes will impact the number of lines displayed at any given speed (larger fonts take longer to scroll by, and have fewer characters on a line.) If you require the text to scroll without any variations in the number of lines displayed in a given time, just make sure to set all text to use the same font and font size.

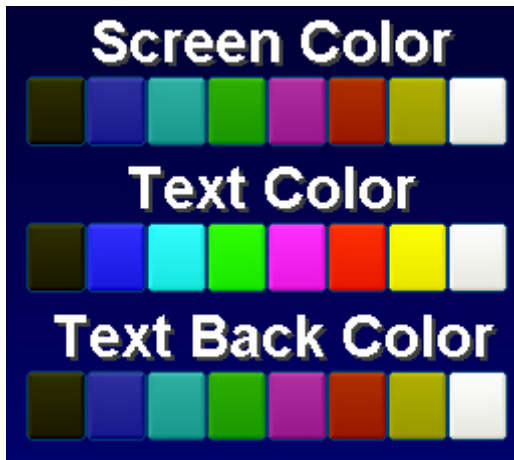
When creating your script in the editor, keep in mind that the Editor displays the script at 50% of the size it will appear on the screen in scroll mode. Thus, 24 point in the Editor becomes 48 point size in Scroll Mode, 26 point font becomes 52 point size, and so on. You will find that sizes in the 36-60 point range work best for your scroll screen display.

If you would like to apply an attribute to all the text in the editor, just click the Select All button. Then, any attributes you select (Bold, Italic, Colors, All Caps, etc.) will immediately be applied throughout the text.

Use the mouse to highlight lines, words, or phrases that require emphasis, then either change the color, size, or style (bold, italic, underline or block reverse-out) for emphasis. Now is also the time to mark your script up for scrolling, adding lines, spelling out numbers, adding bookmarks, or whatever you choose to make the script scroll at a reasonably steady pace.

Editor Screen Buttons Detailed

Color Selection Buttons



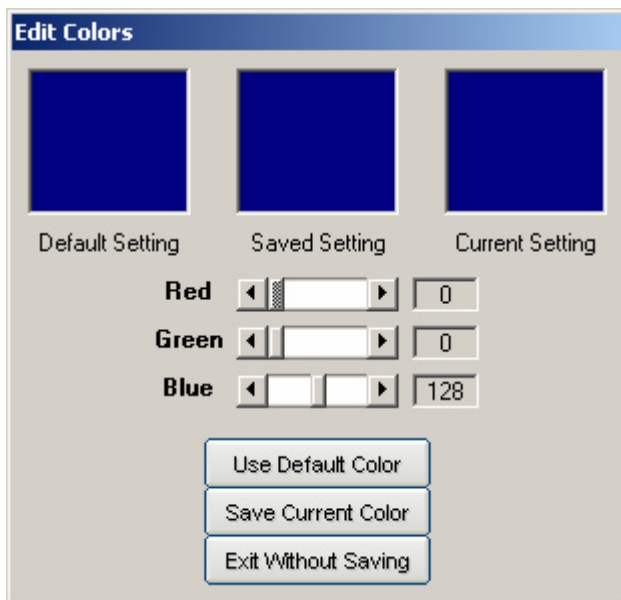
These three rows of buttons specify the colors used for EasyReader Pro displays.

The **Screen Color** buttons specify the color used for the overall background display.

Only one Screen Color can be specified in a script, so any new selection will override an existing selection

The **Text Color** buttons specify the foreground text color to be displayed. These buttons apply color changes only to highlighted text. In addition, any text you type after selecting one of these buttons will appear in that color.

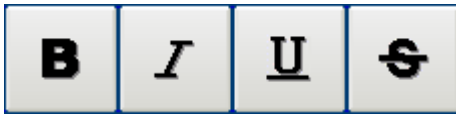
The **Text Back Color** buttons specify the background text color to be displayed. These buttons apply color changes only to highlighted text. In addition, any text you type after selecting one of these buttons will take on that color for its background.



If you right-click any of the **Color Selection** buttons, you are presented with a color configuration menu called **Edit Colors**. This menu will allow you to adjust the properties of display colors to suit your taste.

The use of this menu is self-explanatory. Just remember that you can correct any mistakes with the **Use Default Color** button.

Text Attribute Buttons



These four buttons set various attributes that are applied to highlighted text. In addition, any text you type after selecting one of these buttons will appear in that attribute. These buttons allow you to set more than one attribute at the same time. For instance, text could be simultaneously Bold, Italicized, and Underlined.

Buttons Are:  **B** **Bold**  *I* *Italic*  U Underline  ~~S~~ ~~Strikethru~~.

Font Selection Boxes

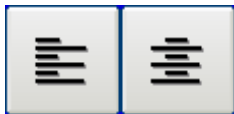


These two boxes allow you to set the font name and size. Remember, like almost every other setting, choices made here apply only to the selected text. If you want to change all text to the same font, just click the Select All button before choosing a new font.

The box on the left selects the font name. When EasyReader Pro starts, it adds all the fonts loaded on your system into this box. To add another font to EasyReader, install it using the standard Fonts program under Control Panel.

The box on the right selects the font size. EasyReader Pro supports font sizes from 8 to 48 points. Remember, the prompter display doubles the font size, so fonts displayed in the editor at 30 points will display in the prompter at 60 points. Fonts displayed in the editor at 48 points will display in the prompter at 96 points. Just think of the text in the editor as a half-sized representation of the prompter.

Text Alignment Buttons



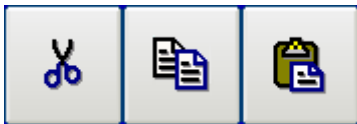
These buttons allow you to set the text alignment. Text can be left-aligned (the button on the left), or centered (the button on the right). Alignment applies to the entire script.

All-Caps and All Lower-Case Buttons



These buttons allow you to force all text to Upper-Case (the button on the left), or all Lower-Case (the button on the right.) Case selection applies only to selected text. Unlike other functions, these buttons have no impact on non-selected text.

Cut, Copy, and Paste



These buttons perform the standard Windows **Cut**, **Copy**, and **Paste** functions. The button on the left is **Cut**, the middle button is **Copy**, and the button on the right is **Paste**. These buttons (like many other features in the editor) are also implemented through keyboard shortcuts. These shortcuts are: **Ctrl-X** to **Cut**, **Ctrl-C** to **Copy**, and **Ctrl-V** to **Paste**.

Copying text from another word processor and pasting it into EasyReader Pro is a popular way to transfer scripts. EasyReader Pro automatically checks pasted text to insure that the font size is within normal limits.

Select All



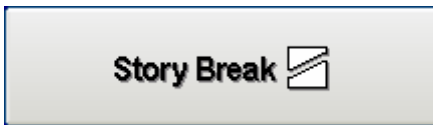
The Select All button allows you to instantly highlight all text in the document. This is useful if you want to change the foreground color of all text at once, change all text to Bold, change all text to Upper-Case, etc. The keyboard shortcut for this button is Ctrl-A. You can also use the mouse or keyboard to highlight all the text in the editor.

Clear Text



The Clear Text button allows you to erase all text in the editor at once. If you press the Clear Text button and the document contains a script, it will first ask if you are sure you want to erase the text. Answering yes will immediately clear out all editor text.

Story Break



The Story Break button inserts a special series of characters in the editor text. These characters instruct EasyReader Pro to display a Story Break when the program is in prompter mode. The characters inserted by this button are: ^----. The Story Break is important because it not only indicates a break in the script, but it also provides a Bookmark to use while prompting.

Insert Bookmark



The Insert Bookmark button inserts a special Bookmark character that is used in prompter mode to indicate a Bookmark. **Ctrl-B** is the keyboard shortcut for Insert Bookmark.

Bookmark characters are only displayed in the editor, not while prompting. The regular bookmark character is a carat (^), and the Selective bookmark character is a tilde (~). Bookmark characters must be the first character on the line for the function to work properly. EasyReader Pro automatically puts the character in the proper place when this button is pressed. However, subsequent editing can move this character from the start of the line. Before prompting, make sure that the Bookmark characters are in the proper place. The two small buttons on the left of the Insert Bookmark button are used to search back and forth to find Bookmark characters. If no matches are found, these buttons have no effect.

Selective Bookmark



Selective Bookmarks are a special type of bookmark that provide additional functionality when scrolling. Selective Bookmarks act just like normal bookmarks in scroll mode, but they are also mapped to the 2-9 keys on the keyboard (keys 1 and 0 always take you to the beginning and the end of the text). If you have inserted Selective Bookmarks, you can jump to their location by pressing keys 2 through 9.

Undo and Redo



The Undo and Redo buttons are used to cancel (in the case of Undo) or re-apply (in the case of Redo) changes made to the editor text. The keyboard

shortcut for Undo is **Ctrl-Z**.

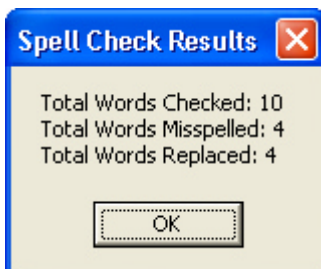
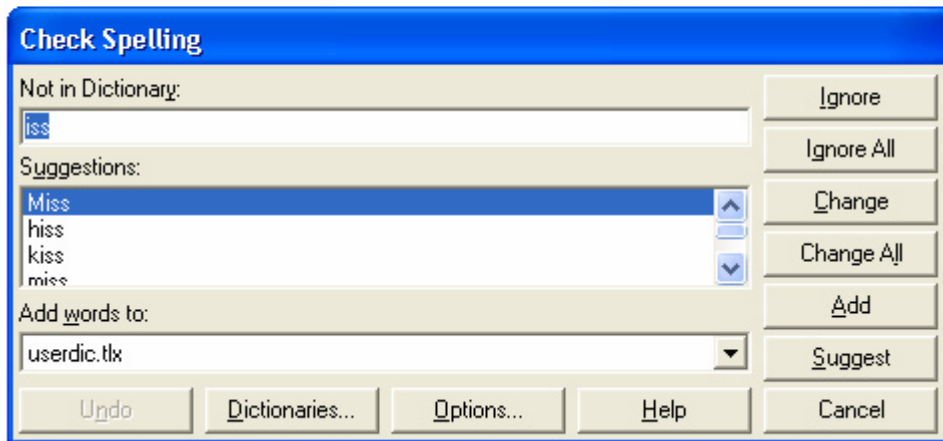
Spelling



The Spelling button invokes EasyReader Pro's spell checker. This spell checker is powerful, but quite simple to use.

This **iss** a test of
EasyReader Pro's
Spelleng Checkur.

To use the spell checker, just click the Spelling button. The program will quickly scan the document for any words that it does not recognize in its dictionary. It then prompts you for instructions about how to handle any unknown words. You can add words to the dictionary, ignore

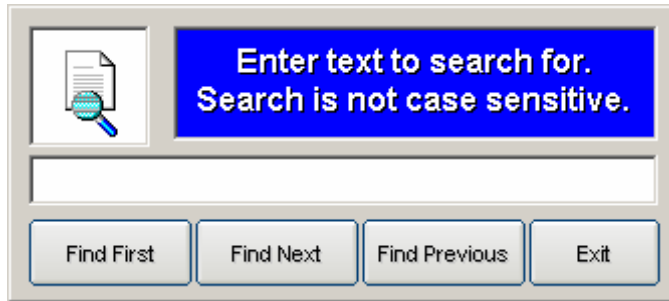


any further instances of a word, or take the dictionary's suggested replacement. When spell-checking is complete, EasyReader Pro presents a summary of results similar to the one on the left.

Find



The Find button allows you to quickly search through editor text. The keyboard shortcut for this button is **Ctrl-F**. When you select this



button, you are presented with the window on the left.

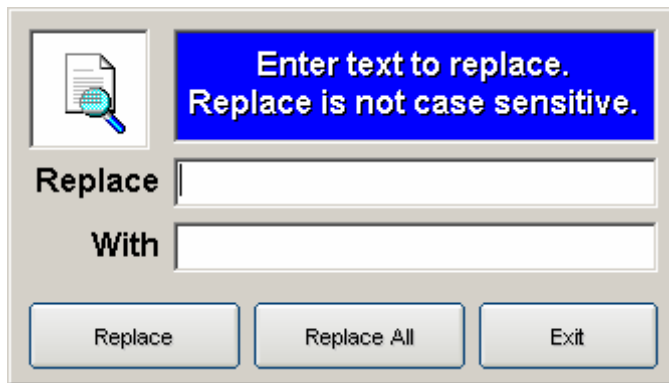
To search for text in the editor, simply enter the text you want to search for in the box provided. You

can search for the first instance of the text, the next instance of the text, or a previous instance of the text. Text searches are not case-sensitive.

Replace



The Replace button allows you to quickly replace editor text. When you select this button, you are presented with the window on the left.



To replace text in the editor, simply enter the text you want to replace in the box labeled **Replace**. Enter the new text you want to use in the box labeled **With**. Like the Search function, the Replace function is not

case-sensitive.

You can replace only one instance of the text at a time by pressing the **Replace** button on the window. If you want to replace all instances of the text in the editor, you can press the **Replace All** button.

Shortcuts



The Shortcuts key simply displays a menu of all keyboard shortcuts available in the program. It displays keyboard shortcuts that apply to the editor in the top half, and shortcuts that apply to the scroller in the bottom half.

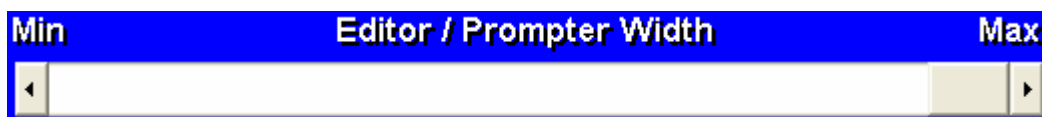
 A dialog box titled "Keyboard Shortcuts" with a blue header and a teal body. It is divided into two sections: "Keyboard Shortcuts Active In The Editor" and "Keyboard Shortcuts Active In The Scroller". Each section lists various keyboard shortcuts with their corresponding key combinations.

Keyboard Shortcuts Active In The Editor		
Ctrl	L	Load
Ctrl	X	Cut
Ctrl	A	Select All
Ctrl	S	Save
Ctrl	C	Copy
Ctrl	B	Bookmark
Ctrl	P	Print
Ctrl	V	Paste
F1		Start display at first line
Ctrl	F	Find
Ctrl	Z	Undo
F2		Start display at current line

Keyboard Shortcuts Active In The Scroller		
←	→	Slow Adjust
Home		Max Speed
Backspace		Reverse Scroll
↓	↑	Fast Adjust
End		Min Speed
F9		Toggle Arrow
Page Up		Last Bookmark
Space		Pause / Resume
F10		Toggle Full-Screen
Page Dn		Next Bookmark
Esc		Exit to Editor
F12		Blank Screen
1 - 0		Jump to Bookmark
B		Insert Bookmark
F		Search (If Paused)

OK

Editor / Prompter Width

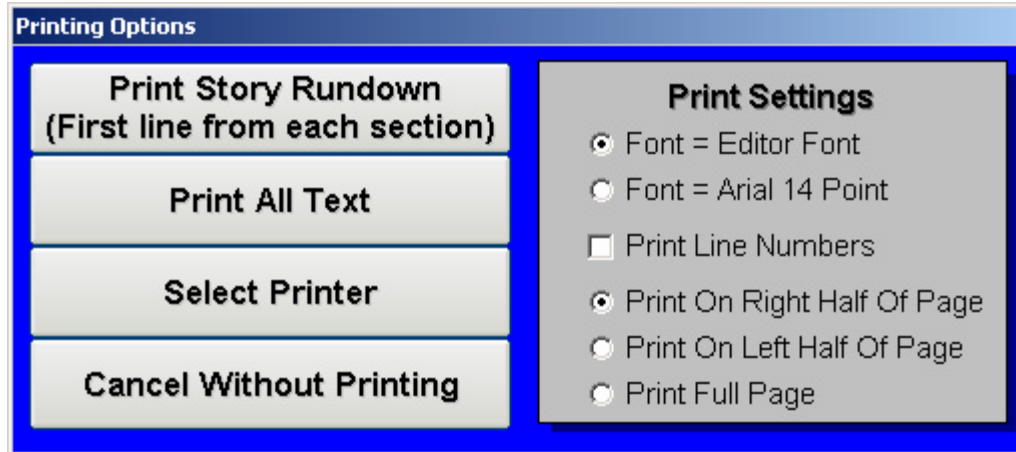


The Editor / Prompter Width bar allows you to set the width of the text displayed both on the editor screen, and in the scroller screen. Changing this setting has an immediate effect on the editor. This setting defaults to the maximum width. Experiment with this setting if you would like a narrower prompter or editor display.

Print



The Print function prints your scripts with a wide variety of options. Its keyboard shortcut is **Ctrl-P**.



When you press the Print button, you are shown the window on the left.

The Print function varies depending on whether or not

you have highlighted text in the editor window. If no text is highlighted, the second button from the top is labeled: **Print All Text** (as above). If you have highlighted any text in the editor, the second button is labeled: **Print Selected Text**.

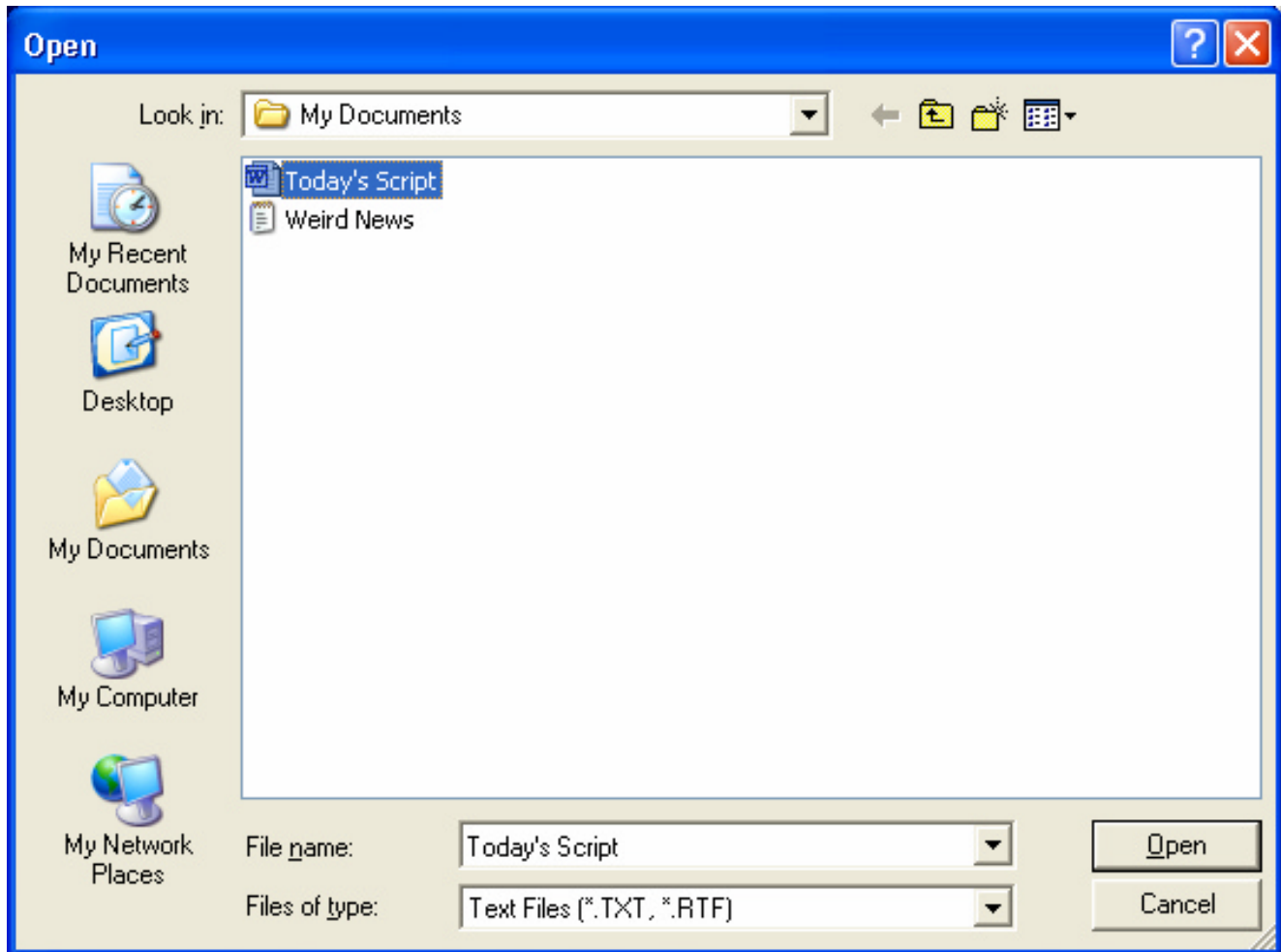
The top button on the left labeled: **Print Story Rundown** allows you to print only the first line from each section. Sections are determined by Story Breaks. The first line in the script is always the first line printed in the Story Rundown. Any subsequent lines that immediately follow a Story Break are also printed. The **Select Printer** button simply allows you to specify the printer you wish to use to print the text. Otherwise, the default printer is used.

Print Settings allow you to set various printing options. The **Font** option allows you to print using either the current font displayed in the editor, or it forces the printer to use Arial 14 Point. Selecting **Print Line Numbers** instructs the printer to print the current line number beside each line of text. **Print On Right Half Of Page**, **Print On Left Half Of Page**, and **Print Full Page** instruct the printer how to format the output. Note that **Print Full Page** does not maintain document text layout.

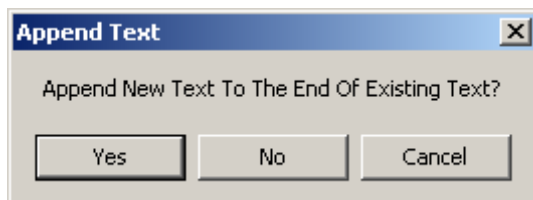
Load Text

Load Text 

The Load Text button allows you to load saved scripts. Its keyboard shortcut is **Ctrl-L**.



The program automatically displays a list of all files ending in .TXT or .RTF in the current directory. However, by clicking the arrow at the end of the Files of type box, you can also tell the program to list all Word .DOC files.



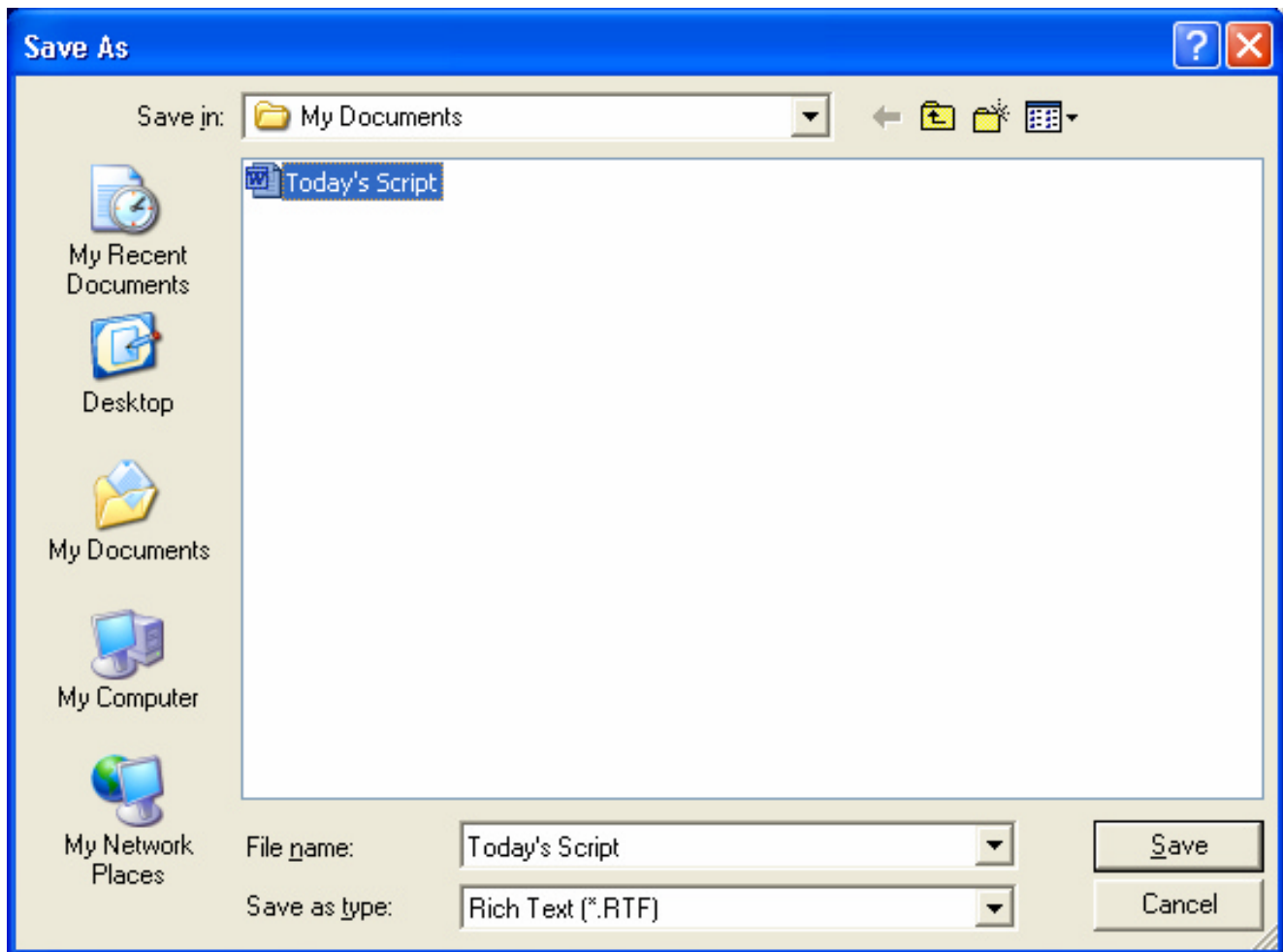
If the editor already contains text, you will be shown the window to the left. If you choose Yes to Append New Text, the document will be loaded at the end of the existing text, and separated by a Story

Break. If you choose No, the existing text will be erased, and replaced by the text you are loading into the editor.

Save Text

Save Text 

The Save Text button allows you to save scripts from the editor. Its keyboard shortcut is **Ctrl-S**.



The program automatically displays the name of the last file loaded into the editor. If no file was loaded, the name of the current file defaults to Untitled.RTF.

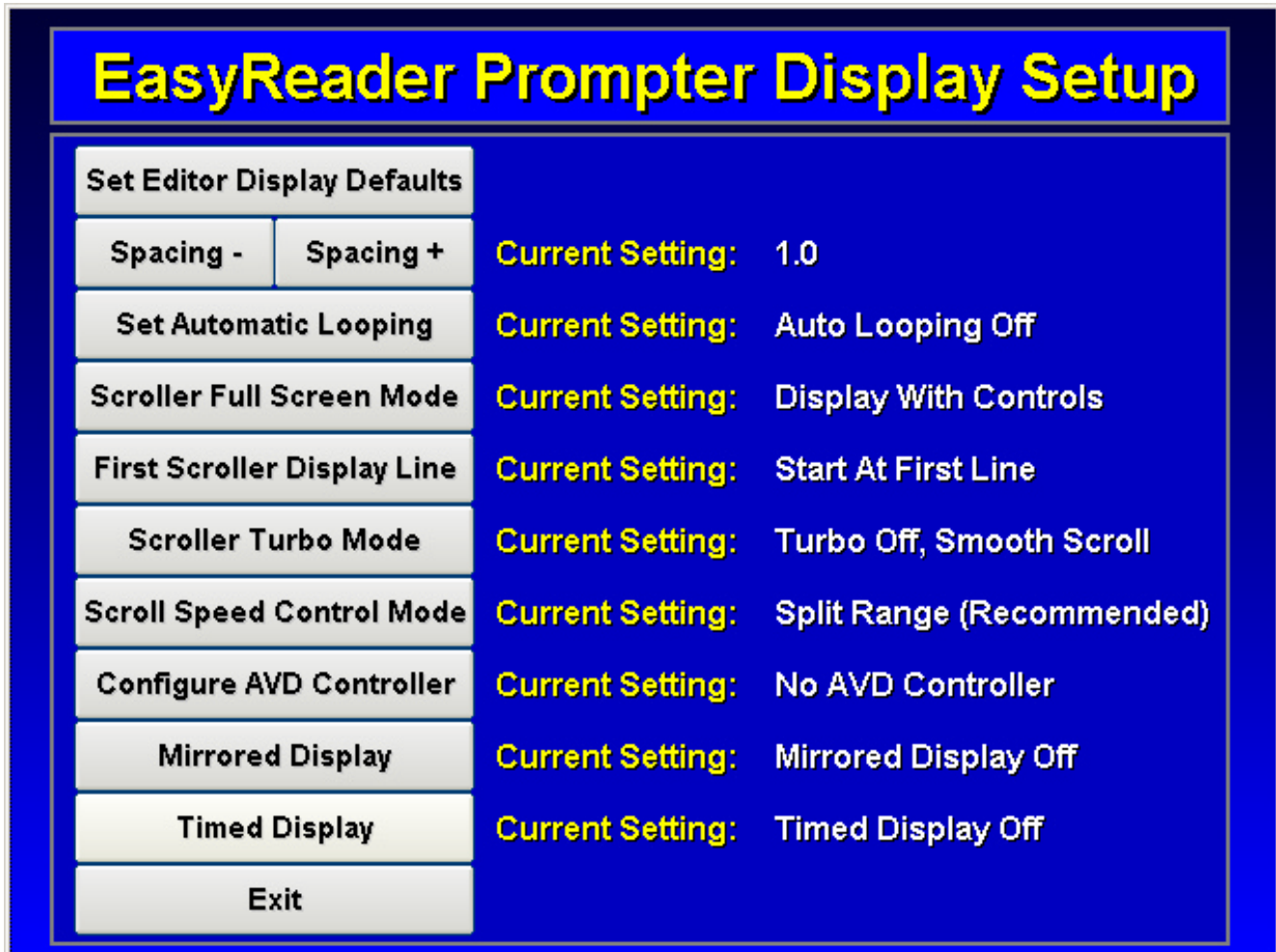
EasyReader Pro defaults to saving all files in .RTF format. The only exception is when a file was loaded with a .TXT extension. You can still save the file as .RTF by overriding the selection in the Save as type box.

Files that were loaded in Microsoft Word .DOC format cannot be saved in .DOC format. They should be saved as .RTF files.

Setup



The Setup button Invokes the EasyReader Pro Display Setup Menu.



The Display Setup Menu allows you to set various EasyReader Pro operating parameters. The Display Setup Menu handles defaults for both the editor and the scroller, as well as providing a way to customize the AVD hand controller.

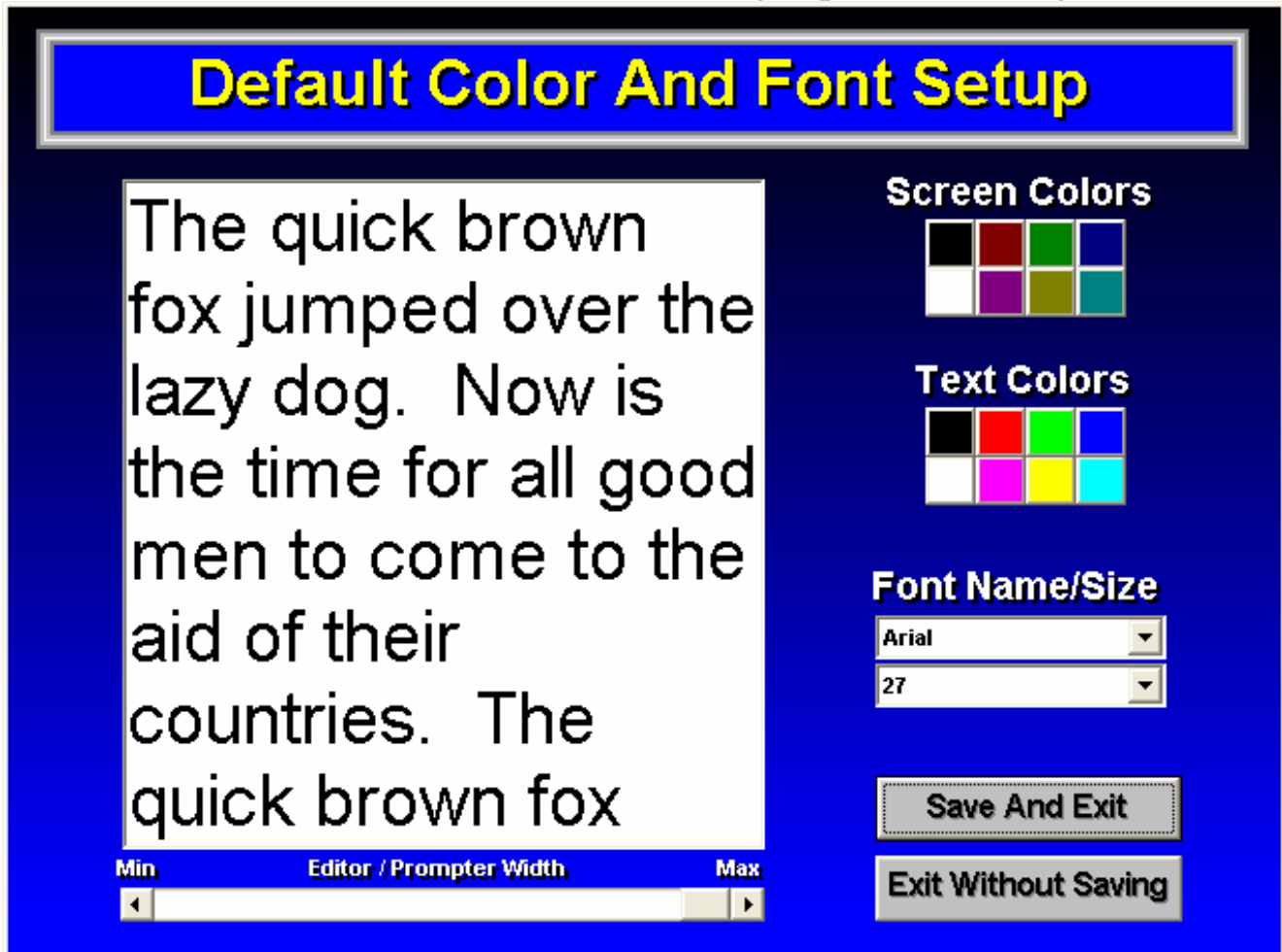
All of the options on this menu are saved each time EasyReader Pro exits.

We will look at all ten setup buttons on the next few pages.

Setup Menu – Set Editor Display Defaults



The **Set Editor Display Defaults** button brings up the following screen:



This screen allows you to set the default Screen Colors, default Text Colors, default Font Name, default Font Size, and default Editor / Prompter Width.

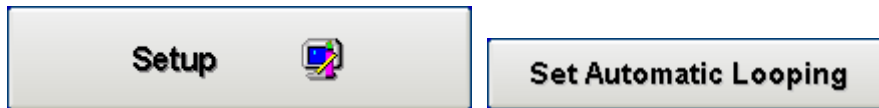
As you make your selections, they are displayed in the preview window. Remember, none of these settings are locked-in when you are creating scripts. You can change any or all of them from the editor. However, these are the settings that are initially present in the editor each time the program loads.

Setup Menu – Spacing



The **Spacing** setting modifies the amount of space between lines in the scroller. It has no impact on the editor. Values range from 1.0 (the default) to 2.0. To change the values for this setting, click the **Spacing -** button to reduce spacing, and the **Spacing +** button to increase spacing.

Setup Menu – Set Automatic Looping



The **Set Automatic Looping** setting dictates whether or not EasyReader Pro runs in automatic mode. When Automatic Looping is turned off (the default), EasyReader Pro will only respond to user input. When Automatic Looping is on, EasyReader Pro responds to a limited number of inputs.

With Automatic Looping on, EasyReader Pro will pause for five seconds when it enters the scroller mode. It then automatically begins scrolling until it reaches the end of the text. It waits for five seconds at the bottom of the text, and then begins scrolling from the top again. In this mode, it will respond to speed changes, but not to other inputs such as pause.

Setup Menu – Scroller Full Screen Mode



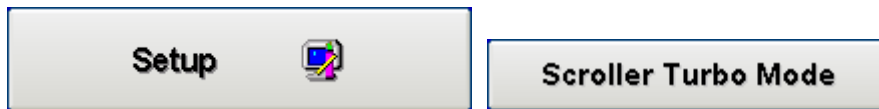
The **Scroller Full Screen Mode** setting controls the default behavior when EasyReader Pro enters the scroller mode. Display With Controls (the default) means that the program will show all user controls when prompting. Display Full Screen means the controls are hidden. This setting is easily changed when EasyReader Pro is in the scroller mode.

Setup Menu – First Scroller Display Line



The **First Scroller Display Line** setting controls the first line to be displayed when the user clicks the Start button on the editor screen. Start At First Line (the default) tells EasyReader Pro to begin prompting from the first line in the editor, no matter what line you are currently editing. Start At Current Line tells EasyReader Pro to begin displaying from whatever line you are currently editing. This can be overridden by using the F1 key to start at the first line, and the F2 key to start at the current line.

Setup Menu – Scroller Turbo Mode



The **Scroller Turbo Mode** setting allows EasyReader Pro to scroll text at much higher speeds. However, this comes at the price of smoothness. Use this setting only if your computer/video card combination is very slow.

Setup Menu – Scroll Speed Control Mode

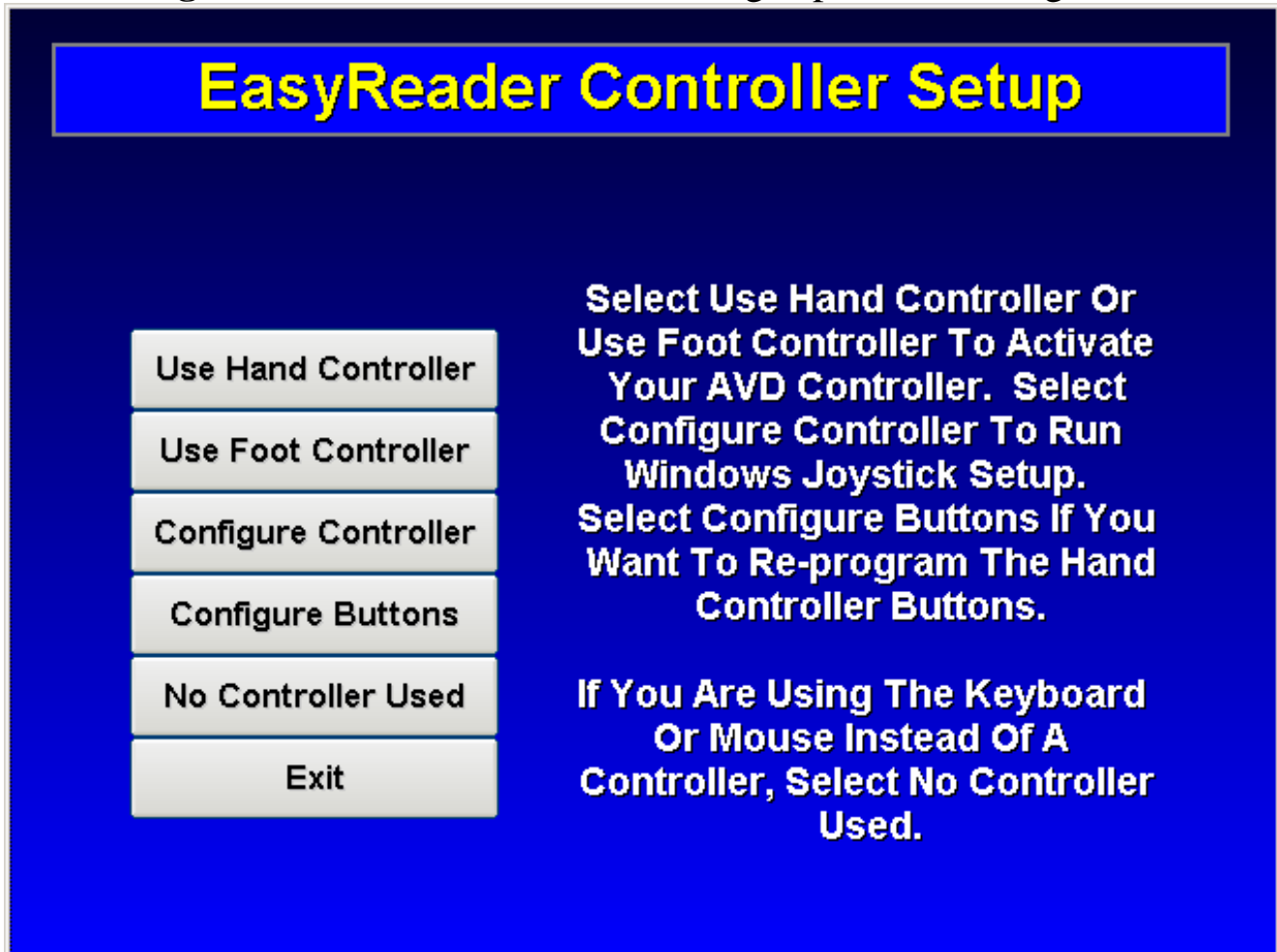


The **Scroll Speed Control Mode** setting determines how EasyReader Pro responds to speed inputs while scrolling. Split Range (the default) tells EasyReader Pro to run at full forward speed when the control is at the far right, pause when the control is centered, and run at full reverse speed when the control is at the far left. Full Range tells EasyReader Pro to run at full speed (forward or backward) when the speed control is at the far right, and pause when the speed control is at the far left. While Full Range is slightly more sensitive, it does not support controller configuration buttons, and is somewhat more cumbersome to operate.

Setup Menu – Configure AVD Controller



The **Configure AVD Controller** button brings up the following screen:



The **Use Hand Controller** button tells EasyReader Pro to respond to AVD Hand Controller inputs. It will alert you if it cannot find the controller.

The **Use Foot Controller** button tells EasyReader Pro to respond to AVD Foot Controller inputs. It will alert you if it cannot find the controller.

The **Configure Controller** button brings up the standard Windows game controllers setup. Use this program to calibrate and test the controller.

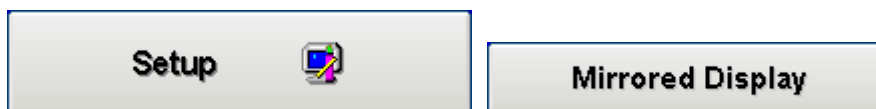
The **No Controller Used** button tells EasyReader Pro to ignore controller input. You can still control scrolling with the keyboard or the mouse.

The **Configure Buttons** button brings up the following screen:

EasyReader Controller Setup	
Controller Button 1	Controller Button 2
<input checked="" type="radio"/> Jump To Next Bookmark <input type="radio"/> Jump To Previous Bookmark <input type="radio"/> Pause <input type="radio"/> Jump To Beginning Of Text <input type="radio"/> Jump To End Of Text <input type="radio"/> Toggle Full-Screen Mode <input type="radio"/> Exit To Editor Screen <input type="radio"/> Insert Bookmark <input type="radio"/> Disable Button	<input type="radio"/> Jump To Next Bookmark <input checked="" type="radio"/> Jump To Previous Bookmark <input type="radio"/> Pause <input type="radio"/> Jump To Beginning Of Text <input type="radio"/> Jump To End Of Text <input type="radio"/> Toggle Full-Screen Mode <input type="radio"/> Exit To Editor Screen <input type="radio"/> Insert Bookmark <input type="radio"/> Disable Button
Save Settings	Cancel

This screen sets the function of the two buttons on the AVD Hand Controller. The defaults for the hand controller are: Button 1 – Jump To Next Bookmark. Button 2 – Jump To Previous Bookmark. The controller buttons always take on a Begin Scroll function when the program first enters the scroller mode. It is only after the text begins to scroll that the buttons take on the values from this screen. Note that the foot controller is not configurable.

Setup Menu – Mirrored Display



Mirrored Display mode causes the display to appear as a mirror-image in the scroller mode. This is useful with certain types of equipment.

Setup Menu – Timed Display



Timed Display mode causes EasyReader Pro to automatically set a scroll speed that will force the text to complete scrolling in a specified time. The duration is set at the bottom of the screen in Scroll mode. When the scroller is running in Timed Display mode, it will ignore most user inputs, responding only to commands to start scrolling, and restart scrolling. Another difference with Timed Display mode is that the screen starts out blank, and the first lines of text scroll in from the bottom.

Note that this mode cannot scroll text more quickly than the computer is normally capable of doing. This mode works well with reasonable time settings, and eliminates any scrolling speed variations.

Start



The **Start** button tells EasyReader Pro to leave the editor screen and jump to the scroller screen. When this button is clicked, EasyReader Pro checks to make sure that there is some text to display. If the editor does not contain any text, this button has no effect.

The behavior of this button is determined by the value in the Display From button. By default, scroller text display begins at the First line. However, the Display From button also supports Display From Current Line. This means that clicking the start button will cause EasyReader Pro to enter scroller mode and begin displaying text at the current cursor line.

Exit



The **Exit** button tells EasyReader Pro to quit and return to Windows. If the editor text has been changed, it will ask if you want to save first.

Editor Functions Only Available Through The Keyboard



F1 – Start Display At First Line. Pressing F1 while in the editor will tell EasyReader Pro to enter scroller mode and begin the display at the first line in the editor. This overrides any settings for where to begin scrolling. F1 only works when the editor contains text.

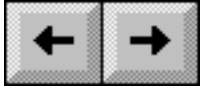


F2 – Start Display At Current Line. Pressing F2 while in the editor will tell EasyReader Pro to enter scroller mode and begin the display at the current line in the editor. This overrides any settings for where to begin scrolling. F2 only works when the editor contains text.

EasyReader Pro Scroller Mode

EasyReader Pro can be controlled in Scroller Mode through three different means: Keyboard, Mouse, and AVD Controller.

Keyboard Controls Used In Scroller Mode



The **Left** and **Right Cursor** keys are used to make small adjustments to scrolling speed. These keys can work along with the mouse, but have no effect when the AVD controller is used.



The **Up** and **Down Cursor** keys are used to make large adjustments to scrolling speed. These keys can work along with the mouse, but have no effect when the AVD controller is used.



The **Home** key is used to immediately jump to maximum speed (either forward or reverse). This key can work along with the mouse, but has no effect when the AVD controller is used.



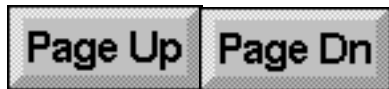
The **End** key is used to immediately jump to minimum speed (either forward or reverse). This key can work along with the mouse, but has no effect when the AVD controller is used.



The **Space** key is used to pause / resume the scroll. It is also used to begin scrolling when the program first enters the scroller screen. This key will function while the AVD controller is used.



The **Backspace** key is used to reverse the scrolling direction. This key can work along with the mouse, but has no effect when the AVD controller is used.



The **Page Up** and **Page Down** keys are used to jump to Bookmarks. Page up jumps to the previous Bookmark, and Page Down jumps to the next Bookmark. These keys will function while the AVD controller is used.



Number keys **1**, **2**, **3**, **4**, **5**, **6**, **7**, **8**, **9**, and **0** are used to jump to specific Bookmarks. The **1** key will always jump to the beginning of the text, and the **0** key will always jump to the end. Keys **2**, **3**, **4**, **5**, **6**, **7**, **8**, and **9** will take you to the first eight Bookmarks. These keys will function while the AVD controller is used. Remember, these are the keys at the top of the keyboard, not the keys on the numeric keypad.



The **F9** key is used to toggle the position arrow at the left side of the screen on and off. This key will function while the AVD controller is used.



The **F10** key is used to toggle Full Screen mode on and off. This overrides the Full Screen setting configured through Setup. This key will function while the AVD controller is used.



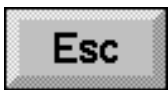
The **F12** key is used to blank the screen when the prompter is not in use, or you want to hide the screen. Press **F12** to restore the screen.



The **B** key is used to insert Bookmarks in the text while it is scrolling. Pressing the **B** key will momentarily display an indicator at the bottom of the screen. This indicator verifies that the Bookmark was successfully inserted. All EasyReader Pro Bookmark functions will immediately use the new Bookmark. When the scroller is exited, EasyReader Pro will ask if you want to make the new Bookmarks permanent. This key will function while the AVD controller is used.



The **F** key activates the Find function in scroller mode. The **F** key only works when scrolling is paused. The Find function works much like the Find function in the editor. This key will function while the AVD controller is used.



The **Esc** key exits the scroller mode immediately. If any Bookmarks were inserted while scrolling, the program will ask if you want to make them permanent. The **Esc** key returns to the editor at the location of the last line displayed in the scroller.

Mouse Controls Used In Scroller Mode

For the mouse to function correctly in scroller mode, make sure that the mouse pointer is in the scrolling text window.

Mouse Functions When Scroll Speed Control Mode Is Split Range:

Right Mouse Button Click: Click to start initial text scroll. After initial text scroll begins, clicking the **Right** button will toggle pause on and off.

Left Mouse Button Drag: Hold down the **Left** button and slide the mouse **Forward** or **Right** to move the speed control to the right. Slide the mouse **Back** or **Left** to mouse the speed control to the left. This method will change both scroll speed and direction.

Mouse Functions When Scroll Speed Control Mode Is Full Range:

Right Mouse Button Click: Click to start initial text scroll. After text scroll begins, clicking the **Right** button will toggle pause on and off.

Left Mouse Button Drag: Hold down the **Left** button and slide the mouse **Forward** or **Right** to move the speed control to the right. Slide the mouse **Back** or **Left** to mouse the speed control to the left. This method will change scroll speed only

Right Mouse Button Drag: Hold down the **Right** button and slide the mouse **Forward** or **Right** to set scroll direction forward. Slide the mouse **Back** or **Left** to set scroll direction backward.

AVD Hand Controller Functions Used In Scroller Mode

The AVD Hand Controller is quite easy to use, and is very configurable. Refer to the Setup section to learn how to configure the controller buttons.

The AVD hand controller functions in two different ways depending on the setting for Scroll Speed Control mode. Scroll Speed Control mode is set through the Setup menu. The recommended setting is Split Range mode.

Split Range mode allows the AVD hand controller to set both the display speed and direction by using only the rotator knob on the controller. It also frees up the buttons and allows them you to configure them.

Full Range mode provides slightly more detailed control than Split Range mode. However, it is much less flexible than Split Range mode. In Full Range mode, the AVD hand controller buttons cannot be configured. In addition, the rotator knob on the controller can only control the scroll speed and not the direction.

AVD Hand Controller Operation In Split Range Mode: Either button is used to start scrolling. As soon as the text begins scrolling, the buttons take on their user-configured roles. Turn the controller knob all the way to the right to scroll text forward at full speed. Turn the knob all the way to the left to scroll text backward at full speed. Center the knob to pause the scroll. Intermediate forward scroll speeds are between the far right and the center. Intermediate backward scroll speeds are between the far left and the center.

AVD Hand Controller Operation In Full Range Mode: Either button is used to start scrolling. Turn the controller knob all the way to the right to scroll text at full speed. Turn the knob all the way to the left to pause the scroll. Intermediate scroll speeds are between the far right and the far left. The left button toggles pause on and off. The right button changes direction. These functions cannot be changed in this mode.

AVD Foot Controller Functions Used In Scroller Mode

The AVD Foot Controller is very straightforward. There are three buttons available, and their operation is simple.

There is normally no need to calibrate the foot controller. Since it is composed only of buttons, the computer simply has to recognize its existence for it to work.

AVD Foot Controller Operation In Split Range Mode: The large central button is used to start scrolling. It is also used to pause and resume the scroll. The left raised button is used to move the position indicator to the left. This has the effect of slowing the scroll down when it's moving forward, and speeding the script up when it's moving in reverse. It will also pause and then change the scroll direction if the indicator is moved from the right half of the indicator box into the left half. The right raised button is used to move the position indicator to the right. This has the effect of speeding up the script when it is moving forward, and slowing down the script when it is moving in reverse. It will also pause and then change the scroll direction if the indicator is moved from the left half of the indicator box into the right half.

AVD Foot Controller Operation In Full Range Mode: The large central button is used to start scrolling. It is also used to pause and resume the scroll. The left raised button is used to slow down the scroll speed, and the right raised button is used to speed up the scroll speed. If the left button is used to move the indicator to the far left of the indicator box, it will pause the scroll. Use the right button to move the indicator away from the left edge to resume the scroll. Note that there is no way to change the scroll direction with the foot controller in Full Range mode. However, direction can still be changed from the keyboard or with the mouse.

How to Calibrate your AVD Hand Controller

In order to use your AVD Hand Controller, it must be calibrated.

- 1.) If you are using the Rockfire USB adapter, set the slider on the top to position 3, and plug the AVD hand controller into the Rockfire adapter. Then, plug the Rockfire adapter into one of the computer's USB ports.
- 2.) If you are not using the Rockfire adapter, just plug the controller directly into the computer's joystick port.
- 3.) Follow any prompts the computer gives you about drivers.
- 4.) Start the EasyReader Pro software.
- 5.) Click the Setup button, click Configure AVD Controller, then click Configure Controller.
- 6.) Select the appropriate controller. If you are using the Rockfire adapter, select the Rockfire USB Adapter Mode 3. On some systems, this might be identified as a 4 button, 4 axis controller instead.
- 7.) If you are not using the Rockfire, select 2-axis, 2-button joystick.
- 8.) The status should read OK. Otherwise, it will read Not Connected.
- 9.) Click the Properties button.
- 10.) Click Calibrate and follow the on-screen instructions where applicable. When you are prompted to center the controller, turn the knob midway between the left and right stops. When asked to move the controller to each corner, just turn the knob all the way left and right before centering it again. Ignore any prompts to calibrate other items such as a throttle or rudder control, and just click Next each time. When you are finished, the display should state that you have successfully calibrated the controller. If it does not, you will need to try calibrating it again. Make sure that you save your calibration settings after a successful calibration. If you are using the Rockfire controller, do not worry about the multiple buttons displayed. As long as buttons 1 and 2 work, the controller is fine.
- 11.) After Calibration is complete, click Test to check your settings.
- 12.) The small "+" character in the middle of the test display should move up and down when you turn the controller knob. Don't worry if it moves slightly left or right as well. This is normal.
- 13.) If the controller tests correctly, click OK.
- 14.) Exit EasyReader Pro and then run it again.
- 15.) Make sure that the AVD Hand Controller is selected in Setup.
- 16.) The controller should now work correctly with EasyReader Pro.

Tips For Using EasyReader Pro

Always type in a few lines of dashes or lines at the very beginning of your script along with some kind of identification, such as "Bob Smith's Script, June 1, 9:00 AM", and then put in a few hard return lines before the first line of the script comes up. This will allow you to get up to speed before your reader starts their script. Also put a few lines or spaces at the end of your script so that you can roll past the last line for your reader.

Make sure you've marked up your script for a steady pace. This may involve spelling out numbers; while the number 9,856,577 only takes up nine spaces on the screen, it is more than a mouthful to actually say.

Add blank lines between thoughts or paragraphs. Anything you can do to make the scroll speed more consistent will make it easier when it comes time to scroll the script.

Use EasyReader Pro's colors to indicate changes to the reader(s). This reduces the amount of text displayed, and makes text delivery more consistent.

Display Troubleshooting

1.) I entered a script and clicked on a button to scroll it, but the text did not scroll.

- Make sure the script was in a large enough font to scroll multiple lines. EasyReader Pro will not scroll unless there is more text to display than will fit on the screen.
- Press Enter or the left controller button to start.
- Enter multiple lines or repeating characters at the beginning of every script.

2.) After booting up, I attached the video cable and have no image on the prompter screen.

- Attach the cable and the external monitor (or scan converter) **FIRST, BEFORE** you boot up. This allows the computer to recognize that an external monitor is attached.

3.) My color display in scroll mode is way too slow.

- Your computer may not be powerful enough to display in full color. Refer to the section about improving display performance on page 2.
- Set your display to 640x480, 256 colors.

4.) My scroll screen stops before the end.

- Add multiple blank lines or lines of repeating characters (\$\$\$\$\$\$\$\$\$\$\$\$ is a good one) at the **END** of every script so you may scroll through the end of the script, ending on the "nonsense" line of characters.

Technical Support

Audio Video Design, Inc.

Monday - Friday 9:00 to 5:30 Eastern Time

321-255-1616.

E-mail: **support@AVD-prompt.com**

If you have questions or suggestions about additional software features, hardware compatibility, performance issues, software bugs, or installation problems, please contact:

Russell Holloway (HollowSoft Consulting)

800-815-6578

E-mail: **russavd@bellsouth.net**